

VERSATILE SPECIFICATIONS

Designed for portability and affordability, Verisight Ultra simplifies workflows while delivering exceptional image quality.

HIGH-RESOLUTION VIDEO

HD video resolution enables quick and accurate identification of blockages, defects or other issues.

EFFICIENT WORKFLOW

Large icons, essential commands, and WinCan Web connectivity streamline inspections.

MANEUVERABILITY

Compact design and wider stance conquer tight spaces and uneven terrain.

BUILT FOR DISTANCE

Tackle sprawling networks with confidence using 60 m to 100 m cables.

ADAPTABLE COMFORT

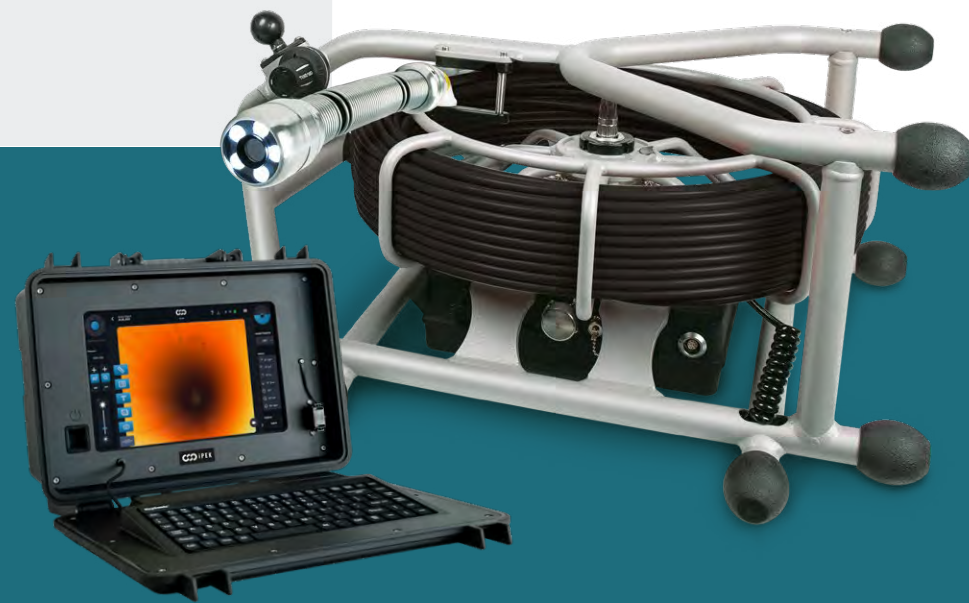
Work longer with less fatigue thanks to the adjustable height handle and tablet mount, optimizing ergonomics and minimizing glare.

WIRELESS FREEDOM

Control the camera, capture data, and share reports wirelessly, maximizing convenience and productivity on the job.



Protective Monitor & Keyword Case for Efficient, On-the-Job Reporting



Verisight Ultra coiler	XR100	XR60
Application range	DN50 – DN300	DN50 – DN300
Push rod length	60 m or 100 m	60 m
Push rod diameter	11 mm	9 mm
Material (frame/basket)	aluminum/stainless steel (powder-coated)	aluminum (powder-coated)
Dimensions* (WxHxD)	645 x 856 x 474 mm	580 x 706 x 323 mm
Weight*	21 kg/27 kg	17 kg
Meter counter	yes	yes
Coiler brake	yes, adjustable	yes, adjustable
E-box	toolless exchangeable	toolless exchangeable
Interfaces (E-box) operations via WiFi/App	1x WiFi, control and monitoring possible via VisionReportApp, external power supply (1x AC IN)	1x WiFi, control and monitoring possible via VisionReportApp, external power supply (1x AC IN)
Radio standard	WLAN: IEEE802.11 b/g/n	WLAN: IEEE802.11 b/g/n
Power supply	110 – 230 VAC	110 – 230 VAC
Exchangeable battery E-box	2 pieces (optional)	2 pieces (optional)
Battery type E-Box	Li-Ion	Li-Ion
Battery runtime** E-box	approx. 6h (3h/battery)	approx. 6h (3h/battery)
Battery capacity E-box	6900 mAh/battery	6900 mAh/battery
Ambient temperature range	0° C to 35° C	0° C to 35° C
Storage temperature range***	-20° C to 45° C	-20° C to 45° C
Protection class****	IP 54	IP 54

1080P FULLHD



Picture shows Verisight Ultra 100 with accessories

Compatible with

- PTP50 HD camera head
- AC40 HD camera head
- VC70
- VisionReportApp****
- RAM® Mount tablet holder

* incl. push rod. without camera, batteries, control panel and trolley.

** battery life depends on the used control panel, camera and the environmental conditions.

*** without batteries

**** VisionReportApp available for Android >8.0 and iOS >12

***** without tablet



Don't take our word for it. Schedule a Demo here.



VERISIGHT ULTRA

NEXT GENERATION PUSH CAMERA TECHNOLOGY



Picture shows Verisight Ultra 60 with accessories



OPERATIONAL VERSATILITY

Perform inspections with the Verisight Ultra standing up or on its side, for added adaptability on uneven ground.

iPEK International GmbH • See, Gewerbepark 22, 87477 Sulzberg, Deutschland • +49 8376 92180-0 • ipek.at

Änderungen vorbehalten.

POWERFUL

The Verisight Ultra rewrites the rules of pipe inspection. View every detail with crystal-clear HD video and maneuver any pipe size with the self-leveling, pan and tilt camera.



COLLABORATE

Stay connected and productive with Verisight Ultra's intuitive app, while WinCan Web Enterprise Cloud connectivity streamlines your workflow. Record HD video and pictures, share data via USB-Stick, link or email, and experience the freedom of wireless control.



1. OPEN A NEW PROJECT

Enter details like asset ID, inspector, address, etc.

2. LOWER THE PUSH CAMERA

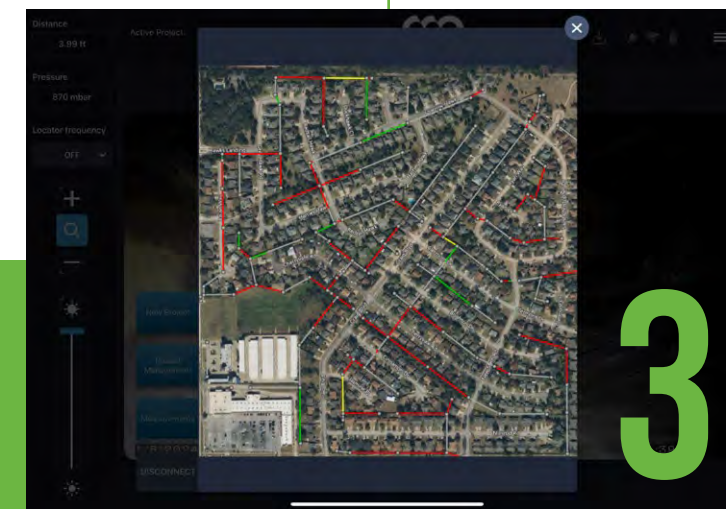
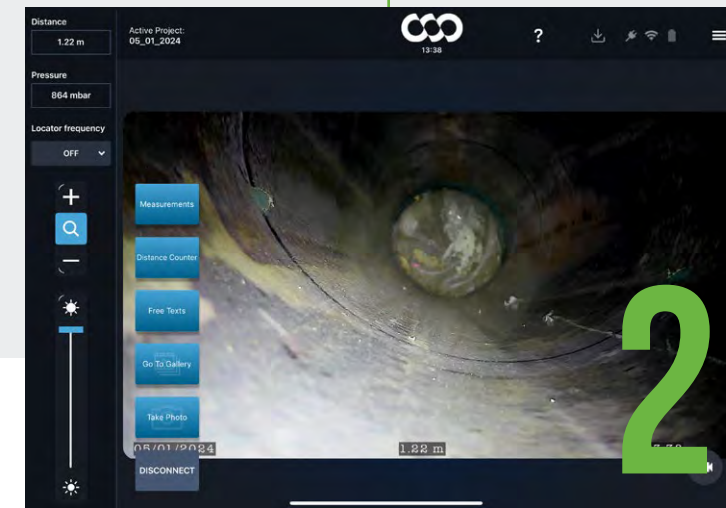
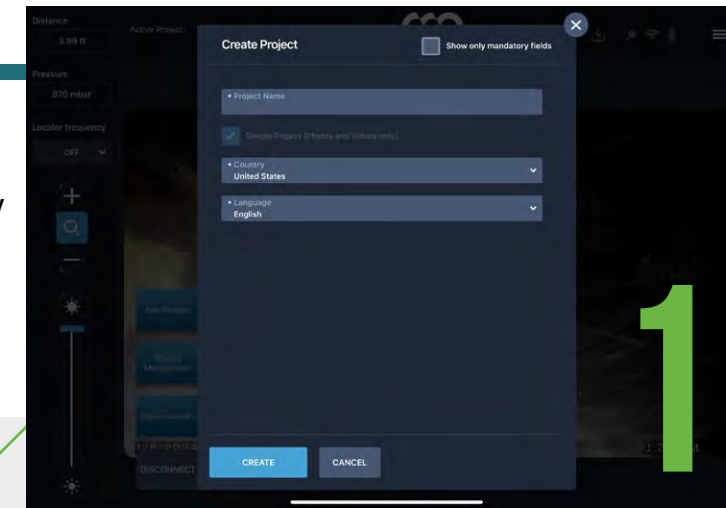
Start your inspection, documenting key points in the footage.

3. UTILIZE GIS VISUALS

Map it and create your work order.

CONNECTED

Wirelessly upload your inspections directly to WinCan Web Enterprise Cloud, the management platform for sewer inspection data. Review, edit, analyze and map inspection data online, and securely share results with your entire team.



OUR ADVANTAGE

Envirosight empowers municipalities, contractors, and engineers with next-generation pipe inspection technology, enabling informed decisions and efficient infrastructure management.

LOCAL PRESENCE

Our systems, part inventory and capabilities are strategically deployed through a network of distributors and channel providers. With more than 80 factory-certified service centers across the world, we're never far when you need help.

TRAINING

On-site training is available through our channel partners for many of our products and technologies, covering equipment care, operation and safety.

RESPONSIVENESS

With a full line of inspection technologies and a comprehensive online parts portal, you can be confident in our solutions and support.

