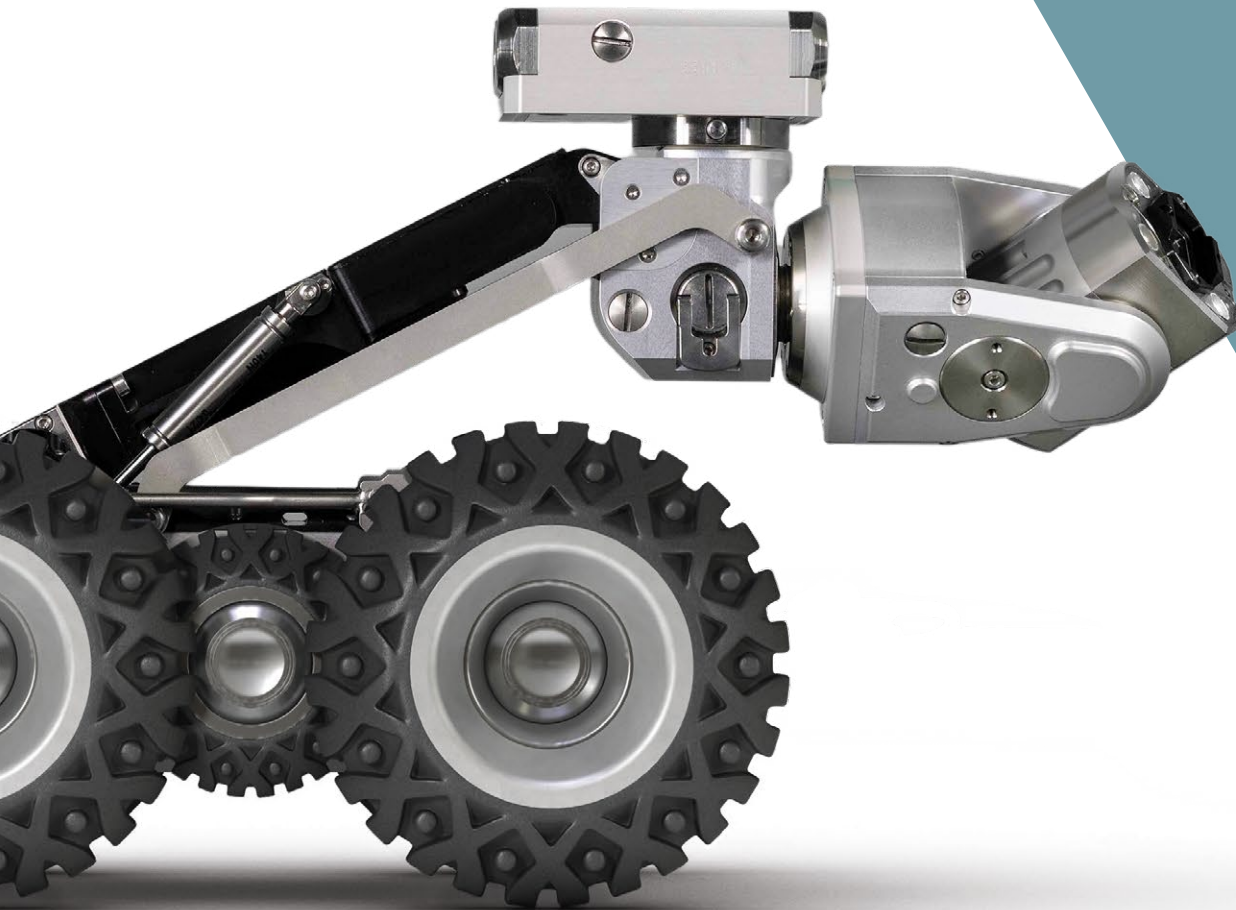
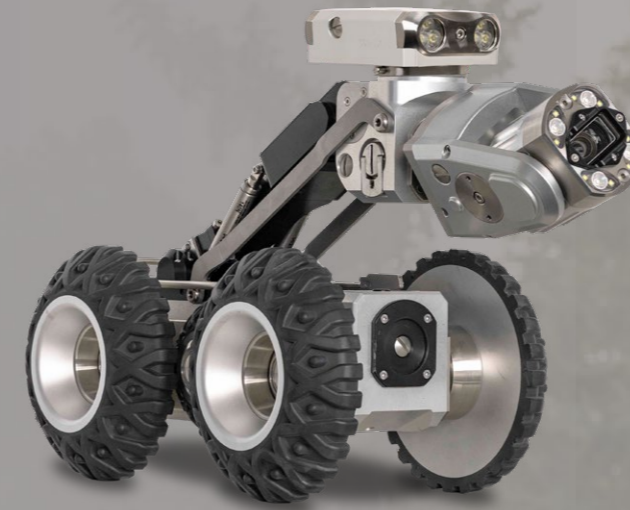




REMOTE VISUAL INSPECTION



A COMPLETE SOLUTION for the Wastewater Infrastructure



Sewer infrastructure deserves more.

Yesterday's maintenance methods—whether reactive or programmatic—simply can't keep up with today's challenges.

At iPEK, we've built a reputation for wastewater infrastructure inspection solutions that provide essential insights through adaptable design and innovative technology. And there's no question that our brands lead the industry: Both our CCTV inspection systems and WinCan software platform claim the largest installed bases in the world.

Now, we're channeling that expertise to something even greater, delivering an enterprise-scale solution that offers a seamless experience for decision-makers, field operators, and everyone in between.



Built From the Ground Up...

- AI defect coding 8
- inspection reporting 9
- asset management 9
- mapping & GIS 10
- rehab planning 10
- enterprise management 11

Analytics & Insight

- mainline inspection crawlers 4
- lateral launch crawlers 4
- push cameras 5
- Inspection transport, Vanfit Lite & more 6
- zoom cameras 6
- manhole cameras 7
- video nozzles 7

Field Operations

- local presence 12
- global footprint 12
- service and support 13
- cost of ownership 13

Service & Support

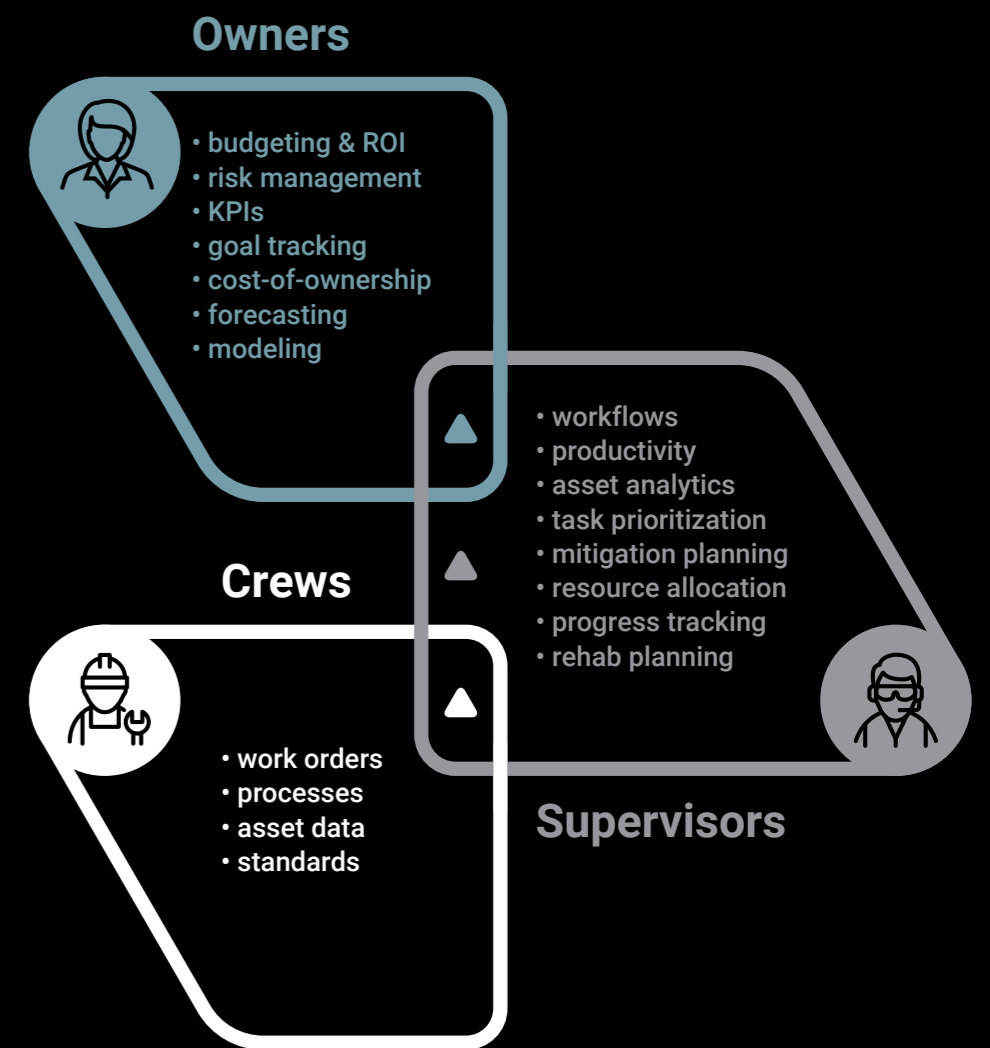
...To Empower Your Entire Team

Our technology is there for your team, every step of the way.

Inspection crews around the world rely on our intuitive platform and versatile technologies to inspect, code and share actionable data.

Our WinCan software offers management tools that seamlessly coordinate workflows across your team, facilitate remote collaboration, and ensure maximum productivity.

And standards-compliant deliverables and dashboards help leadership manage the full value chain for inspection results, from jobsite to boardroom.





MAINLINE INSPECTION CRAWLERS

With unmatched power and agility, ROVION is the world's most trusted CCTV crawler. This compact, 6-wheel-drive system steers through tough underground environments, delivering HD footage and a seamless operating experience. Tool-free wheel and accessory changes, portable build, and modular design limit time wasted at the manhole. Many accessories are also available.

Powerful touchscreen controls enable users to run inspections, view and record digital video, log observations, generate reports, and link directly to asset-management software. ROVION's digital architecture automatically updates with the latest features.

- Mainline crawl distances to 500m
- Compatibility in pipe DN100 and up
- Optional ATEX rating



LATERAL LAUNCH CRAWLERS

ROVION SAT II assesses laterals directly from a mainline with unrivaled speed, range, articulation and pushing force. Perform cross bore inspections and locate illicit flows with steerable eight-wheel drive and three on-board cameras.

- Mainline crawl distances to 300m
- Mainline crawl speeds to 30m/min
- Lateral push distances to 45m
- Lateral push speeds to 7m/min
- Launch from mainlines sized DN150 to DN2000
- Launch into laterals sized DN50 to DN300
- Optional ATEX rating



PUSH CAMERAS

The AGILIOS system inspects laterals and clean-outs, offering touchscreen recording, defect logging, and up to 90° bend mobility for its pan & tilt camera. The system's ultralight reel provides maximum stability on rugged job sites, and two battery packs power a full six hours of inspection. Plus, its modular design supports easy maintenance, transport, extensions and upgrades, so you can handle any job, anywhere.

- Tablet or pendant control options
- Push distances to 100 m
- Compatibility in pipe DN50 and up
- Optional ATEX rating





INSPECTION TRANSPORT, VANFIT LITE & MORE

iPEK inspection trucks, vans and trailers come with the capabilities and amenities you need to maximize productivity in the field. With multiple chassis and power options and customizable storage, the vehicles that roll out of our shop are designed for safety, effortlessly equipped, and ready to work.

A hand cart option enables indoor and easement inspections.

Our Vanfit Lite for flexible installation in all carrier vehicles suitable for Euro pallets. This is a carrier solution for ROVION inspection system for small vehicles. AGILIOS systems can also be mounted on it.

Furthermore the RMT serves as a transport frame with integrated power supply for the manual cable drum RMX200. A suitable case holder allows the transport of crawlers, wheels and other accessories. Plus it provides an ergonomic holder for the VC500 control panel.



SD

HD



ZOOM CAMERAS

The wireless, tablet-controlled Quickview airHD rapidly assesses mainlines from the nearest manhole to determine where CCTV, cleaning or rehab is needed. High-powered zoom optics, HD camera and focused Quad-Haloptic illumination maximize sight distance and detail, allowing you to view pipes too damaged for a crawler and avoid confined space entry.

- Mainline sight distances to 120m
- Compatibility in pipe DN150 and up
- Portable, cable-free design
- Swappable 4-hour batteries for all-day inspection



HD



MANHOLE CAMERAS

With Quickview 360, a single operator can scan up to 80 manholes per day, delivering HD, 360-degree panoramic imaging and 3D point-cloud models ready for export to CAD. Results stream to the cloud via tablet app, where report generation and AI-powered* observation coding can be automated.

- 30' portable telescopic pole
- Pan/tilt controls
- Two cameras and rangefinder for precision measurement



HD

4K

*Feature available in summer 2024, additional cost can occur



VIDEO NOZZLES

Plan cleaning, assess line condition and verify results with the wireless Xpection Lite video nozzle. Captured footage is streamed to a tablet app for rapid understanding of pipe condition. Optimize nozzle choice, check for cross bores and other hazards, and conserve CCTV resources.

- Crisp, HD video
- Compatibility with any jetter truck hose
- Compatibility with pipe DN200 and up



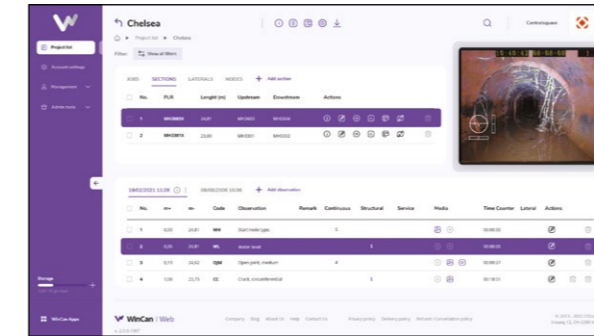
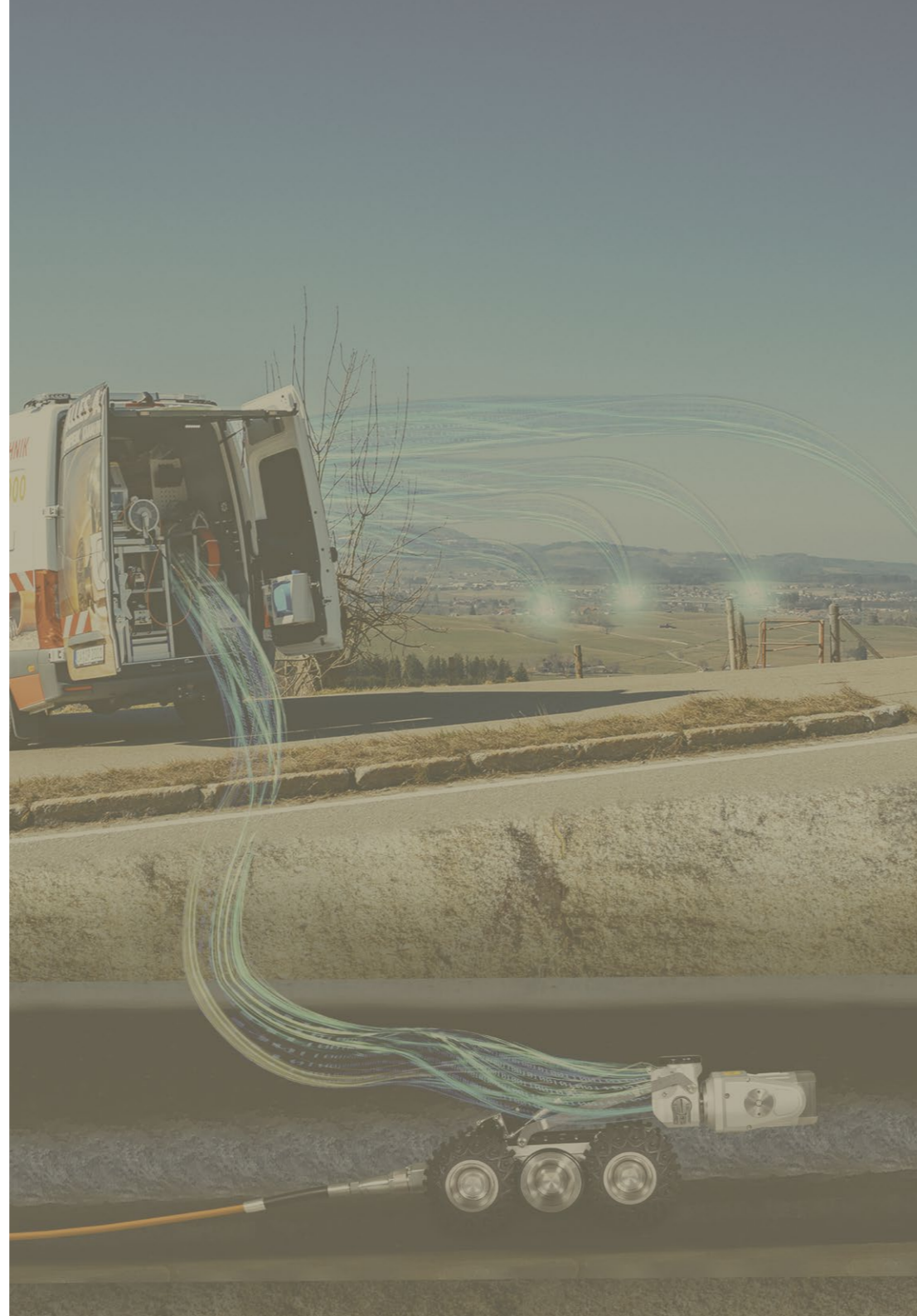
HD



AI DEFECT CODING

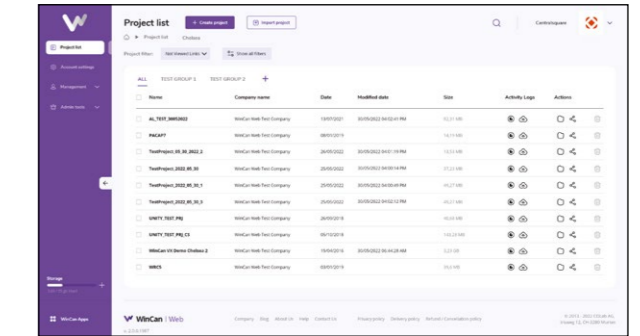
WinCan's AI engine is a high-accuracy, cloud-based inspection tool that automatically codes raw inspection footage. Using machine vision, WinCan quickly identifies and labels defects in your chosen standard, allowing you to accelerate workflows and eliminate bottlenecks.

With AI in your toolbox, you can process more data, faster, and unlock insights into cost savings, rehab strategy and overall system condition.



INSPECTION REPORTING

WinCan provides a complete inspection toolkit, from capturing and coding video to managing work orders and generating detailed, standards-compliant reports. User-friendly, automated reporting capabilities mean you can create a professional, customized deliverable for every assessment. Compile images, measurements and needed data points to give stakeholders a complete view of infrastructure condition—streamlining workflows and collaboration and providing essential documentation.

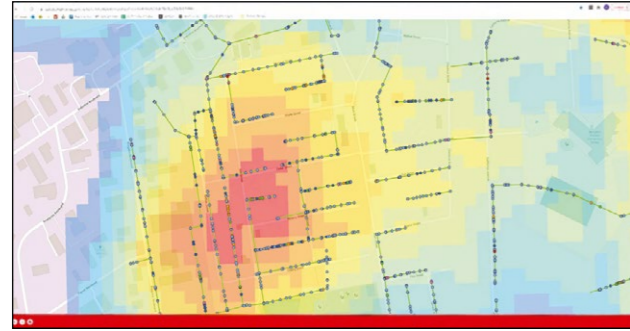


ASSET MANAGEMENT

WinCan's asset-centric data model lets you review the full maintenance history of any manhole or pipe section in your system. Assets tagged with inspection, cleaning and rehab data reveal performance trends over time, providing valuable information about lifetime cost of ownership, remaining service life, and maintenance strategies.

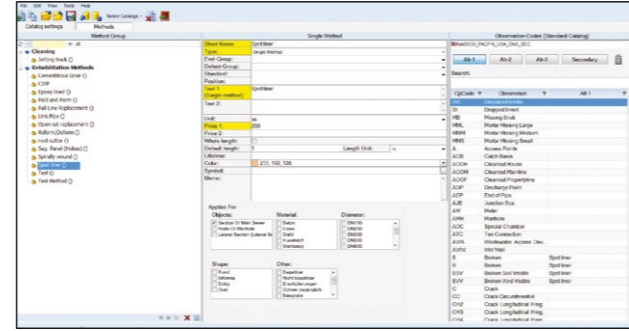
Integrate inspection data with industry-leading third-party asset management platforms, such as Cityworks, Cartegraph and CentralSquare.





MAPPING & GIS

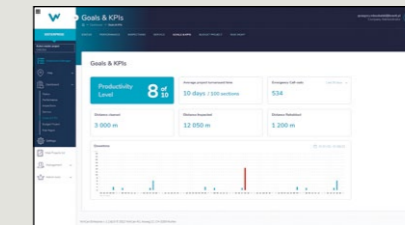
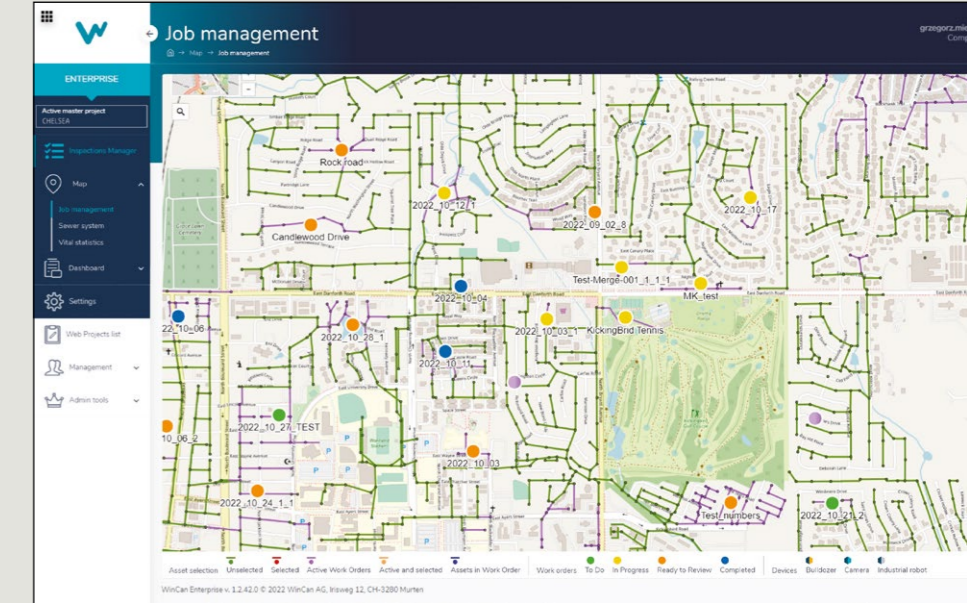
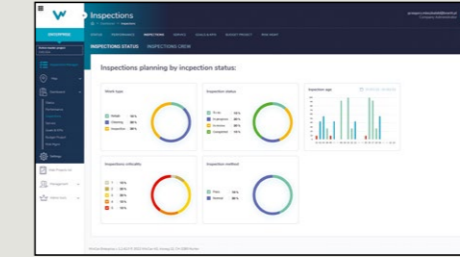
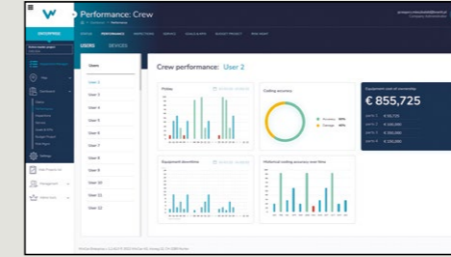
Whether you're leveraging the solution's Esri ArcGIS integration or its native mapping capabilities, WinCan can effortlessly synchronize GIS data, visualize work orders, and generate heatmaps. Mapping functions relay easy-to-interpret details about the severity, criticality and geographic clustering of asset condition. Plus, data visualization tools help review birds-eye-view snapshots of active work orders, completed inspections, and those still pending review.



REHAB PLANNING

Build your own methods catalogue and start making better maintenance decisions with WinCan's rehab planning solutions. Using cost tables of regionally available rehab techniques, WinCan harnesses AI to optimize maintenance strategies and account for defect prevalence, severity, criticality and proximity.

By focusing on preventing failures rather than simply reacting to them, the high costs of emergency response and remediation can be avoided, and continuity of essential public services can be maintained at the highest level. Fine-tune plans to meet operational goals related to risk mitigation, performance impact, and OpEx reduction.



ENTERPRISE MANAGEMENT

WinCan Enterprise equips users with an intuitive inspection manager and a variety of maps and dashboards that help utilities operate holistically, with automated workflows and AI-powered insights. These insights extend beyond performance and condition, covering every aspect of maintenance: crews, workflows, equipment, financials and compliance. A Kanban-style inspection manager helps busy leaders keep projects on pace, and dashboards deliver actionable data that help teams make the most impact in their day-to-day work.

Designed for complex collection systems, WinCan Enterprise empowers owners to keep top-level analytics and up-to-the-moment findings at their fingertips, guiding them to smarter, easier decisions.





LOCAL PRESENCE

Success in our industry is a ground game. We've built a network of regionalized facilities and partnerships to ensure there's always someone nearby to demo the latest tech, answer questions, and provide support and service.

- Rental fleets
- Factory-certified service facilities
- Spare parts inventory
- Operator training
- Applications consulting



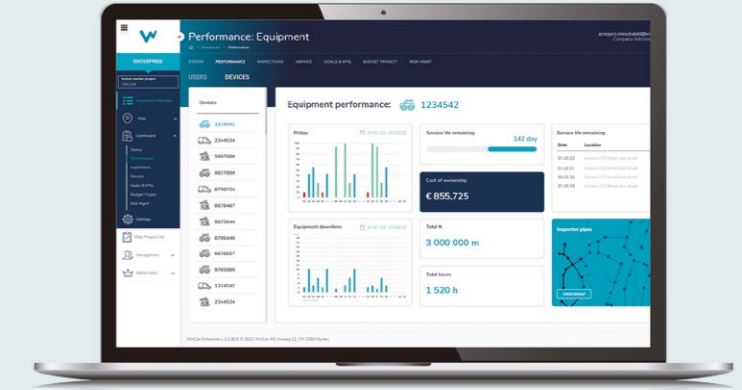
GLOBAL FOOTPRINT

At iPEK, we leverage our global scale to innovate faster and bring new solutions to market ahead of the competition. By marrying decades of experience developing top-of-industry hardware solutions to WinCan's revolutionary software and data capabilities, we offer an unmatched, integrated solution for complete collection system management. And our network of trusted partners, which spans six continents and over 50 countries, provides global sales and support.



SERVICE & SUPPORT

When you work in the toughest of environments, you need technology, service and support you can trust. iPEK's customer success team is standing by to help you with technical issues and challenging applications—just give us a call to get support that's responsive, efficient and friendly. Plus, comprehensive warranties, extended service options, spare parts inventory and maintenance training all empower our customers to fulfill their missions of keeping communities clean, safe and healthy around the world.



COST OF OWNERSHIP

At iPEK, we understand that wastewater systems are essential infrastructure, and that community resources are limited. Industry pros need tools that can prevail in the most punishing conditions.

We prioritize high productivity and low cost of ownership for our solutions. It starts when we design equipment that can power through and deliver actionable results to system operators. From there, we deploy precision craftsmanship and engineering in the manufacturing process, and provide unparalleled support through our global partner network. The result is more durable equipment, less downtime, and better results for iPEK users the world around.



iPEK International GmbH • See, Gewerbepark 22,
87477 Sulzberg, Germany • +49 8376 92180-0 • ipek.at

WinCan AG • Irisweg 12, 3280 Murten,
Switzerland • +41 26 672 37 37 • wincan.com